

Consumer Perspectives on Oral Health Access, Outcomes and Quality of Care

CareQuest Institute Continuing Education Webinar

July 8, 2021

Housekeeping

- All lines will remain muted to avoid background noise.
- CareQuest Institute will provide a copy of the slides and a link to the recording via email the day after a live program. The slides and recording will also be available on the CareQuest.org website.
- **CE Credits**
- In order to receive **CE credit**, participants must fill out an **evaluation form**.
- CareQuest Institute will send an email with a **link to the evaluation form by July 9**.
- Participants must complete evaluations **by July 16**; they'll receive a certificate soon after.

Your feedback is greatly appreciated.



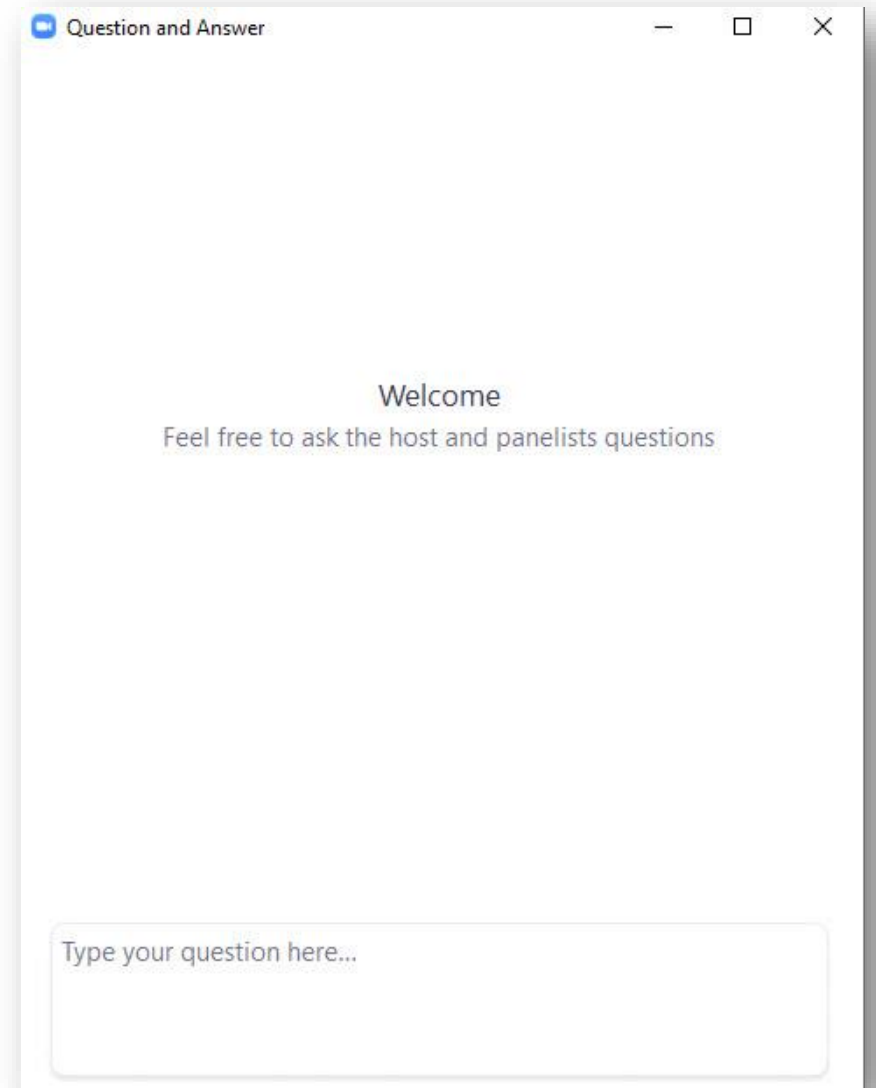
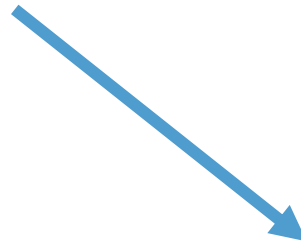
The CareQuest Institute for Oral Health is an ADA CER.P Recognized Provider. This presentation has been planned and implemented in accordance with the standards of the ADA CER.P.

*Full disclosures available upon request



Question & Answer Logistics

- Feel free to enter your questions into the **Question & Answer box** throughout the presentations.
- We will turn to your questions and comments toward the end of the hour.



Learning Objectives

- Explain the national findings and trends of the impact of the COVID-19 pandemic on dental insurance coverage and other social, economic, and health care inequities.
- Recognize the association between the social determinants of oral health and the utilization of dental services.
- Discuss planned and ongoing strategic work, both short- and long-term, that address inequities in oral health access and care.

Presenters

Consumer Perspectives on Oral Health Access, Outcomes, and Quality of Care



WEBINAR | Thurs., July 8, 2021 | 1 p.m. (ET) | ADA CERP Credits: 1

MODERATOR



Abigail Kelly, MS
Biostatistician,
Analytics and Evaluation,
CareQuest Institute for Oral Health

SPEAKER



Carolyn Brown, DDS, M.Ed
Senior Advisor, Consultant,
Person Centered Care,
CareQuest Institute for Oral Health

SPEAKER



Madhuli Thakkar-Samtani, BDS, MPH
Biostatistician,
Analytics and Evaluation,
CareQuest Institute for Oral Health

SPEAKER



Eleanor Fleming, PhD, DDS, MPH
Associate Professor
Department of Dental Public Health
Meharry Medical College

State of Oral Health Equity in America Survey

- The survey is a nationally representative survey of American's attitudes, experiences and behaviors on oral health.
- Designed by the CareQuest Institute for Oral Health and collected in January and February 2021 on adults 18 and older by NORC at the University of Chicago on the AmeriSpeak panel.
- AmeriSpeak is a probability-based panel designed to be representative of the US household population.
- Final sample size $n = 5,320$
- Repeated cross-section for ongoing surveys

Survey Focus Areas

**Oral Health
Attitudes and
Experiences**

**Dental Care
Experiences
and Attitudes**

**Interprofessional
Care**

**Insurance
Coverage and
Attitudes**

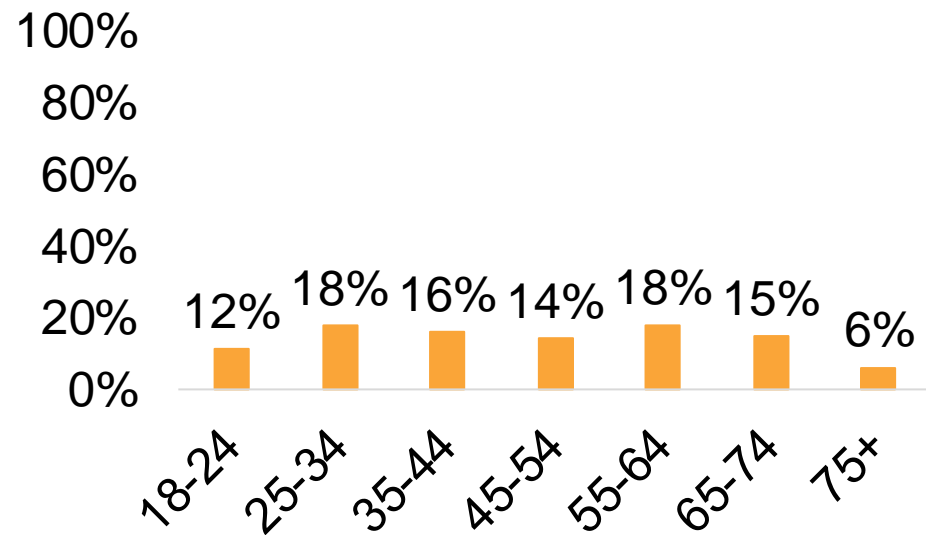
**Social
Determinants
of Health**

COVID-19

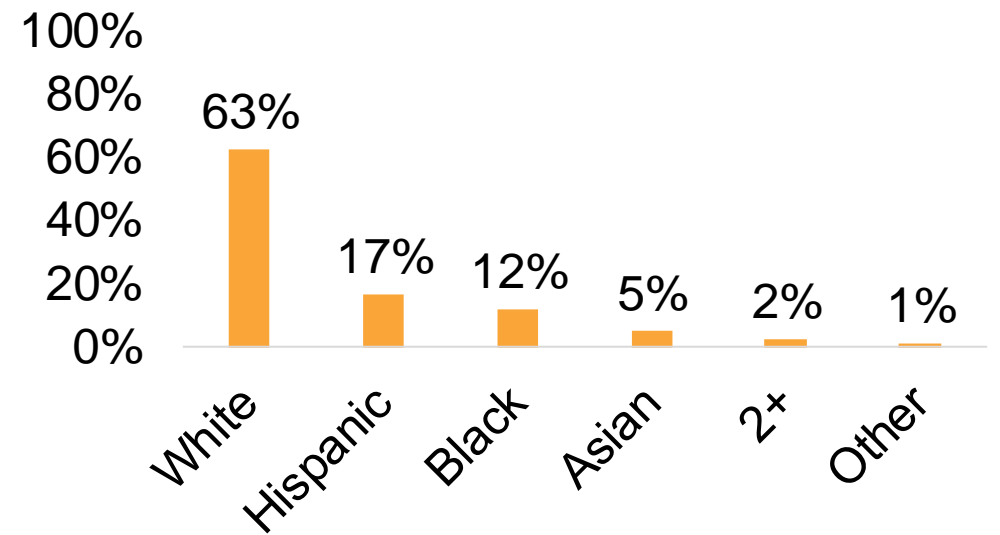
Sample Description

- Final sample size n = 5,320
- 48.5% of respondents were male, 51.5% were female

Age Group

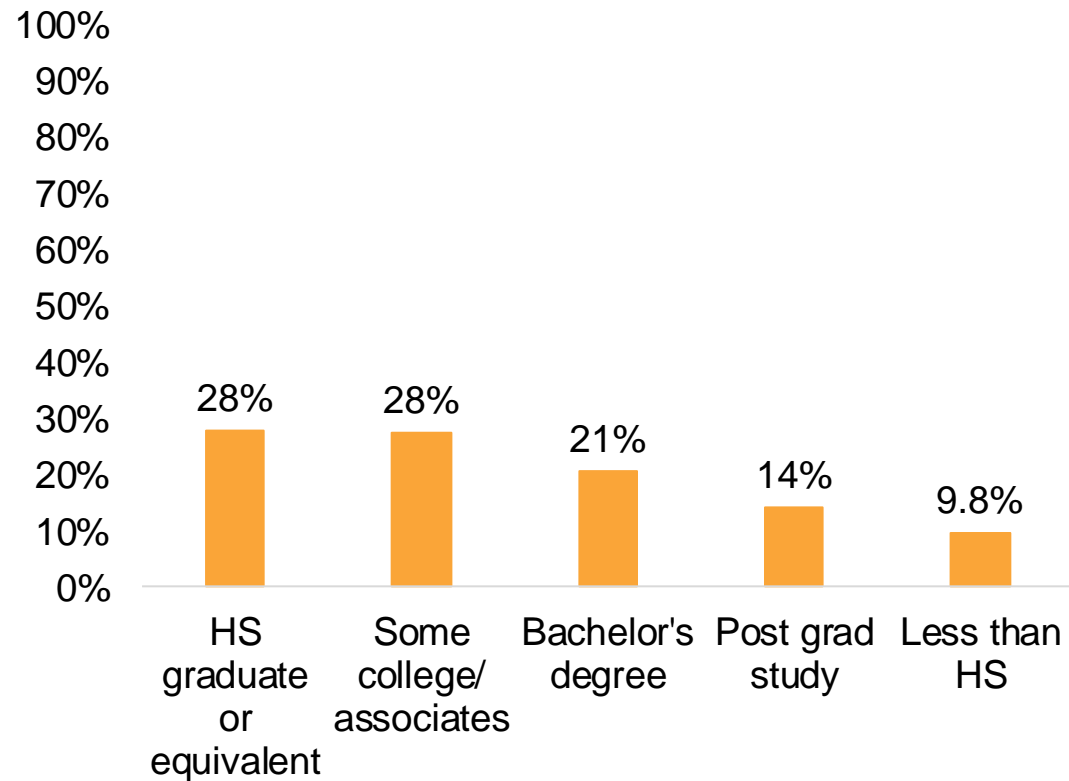


Race/Ethnicity

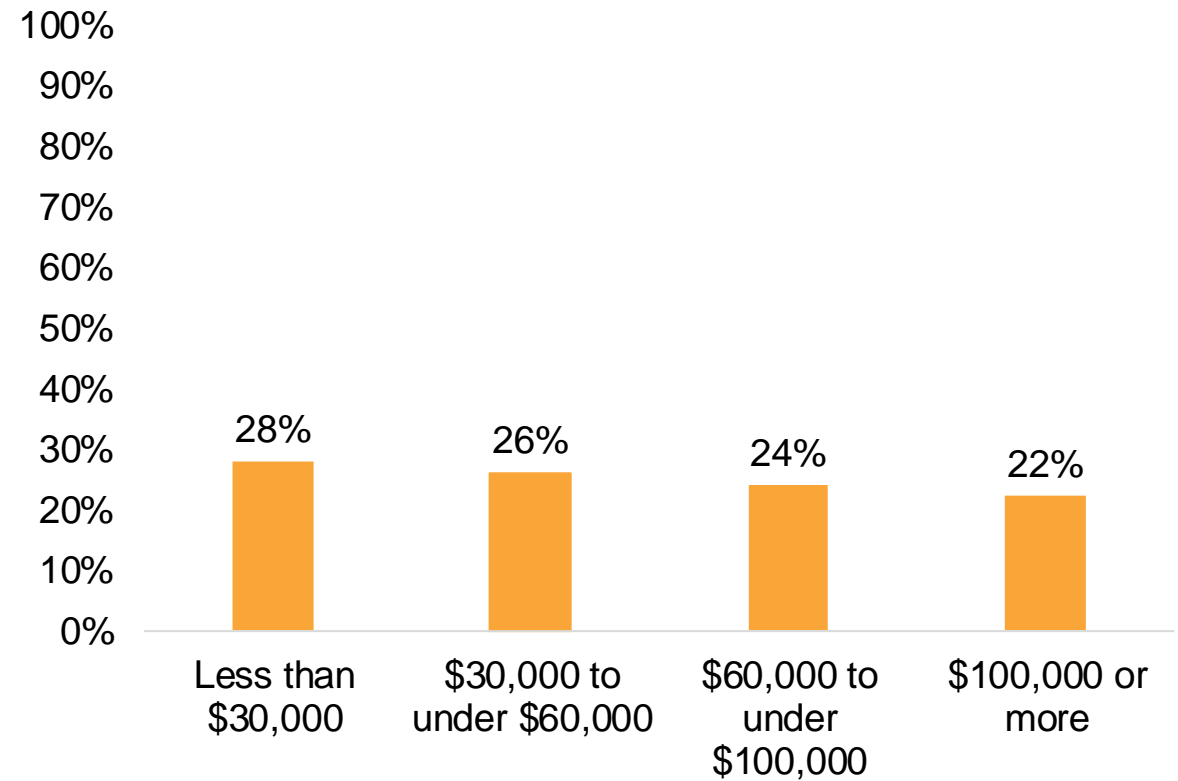


Sample Description

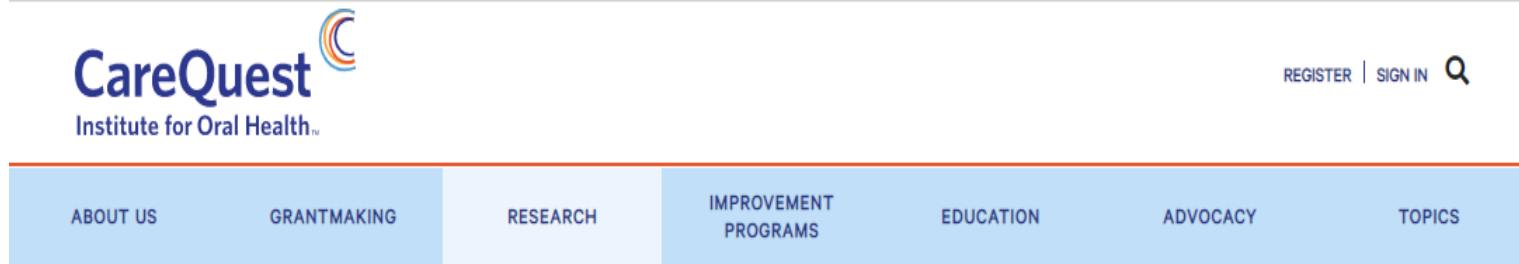
Education



Household Income



Where Can I Learn More About the Infographics?



State of Oral Health Equity in America 2021

The following series of reports was developed from findings from a nationally representative survey of consumer and patient attitudes, experiences, and behaviors on oral health. The survey was designed and commissioned by CareQuest Institute for Oral Health.



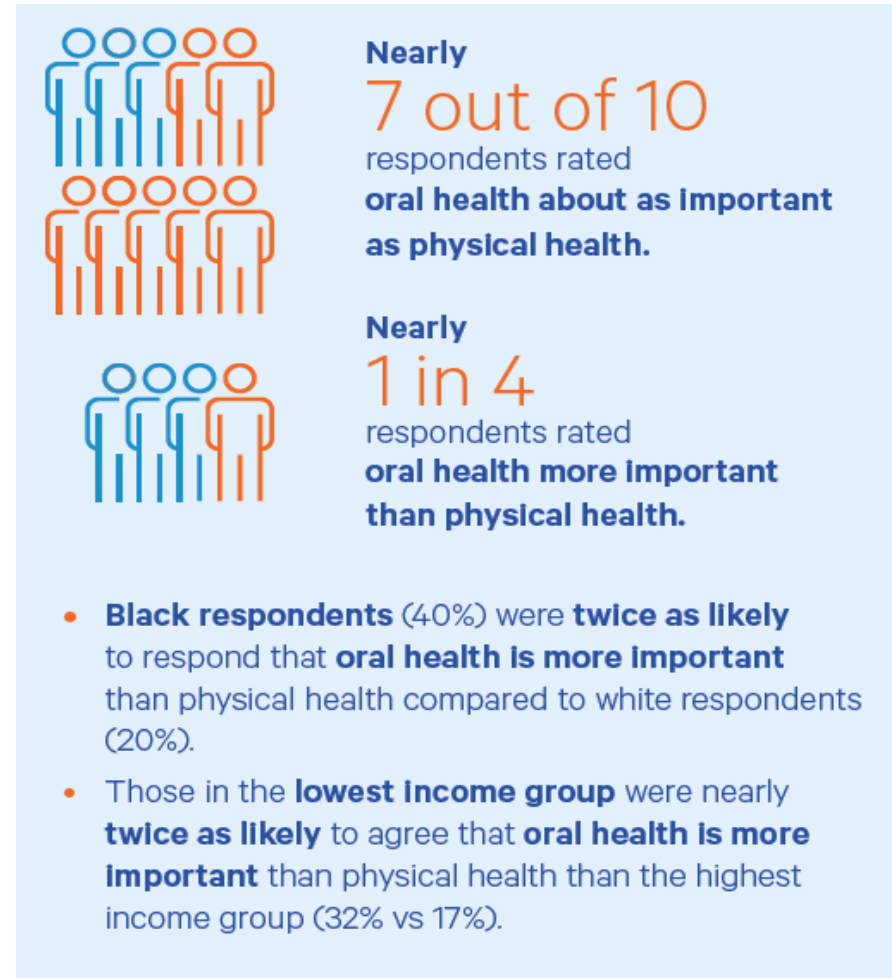
www.carequest.org/learn/online-learning-center/resource-library/state-oral-health-equity-america-2021



Overview of Findings- State of Oral Health Equity Survey

Carolyn Brown, DDS, MEd
Senior Strategic Advisor

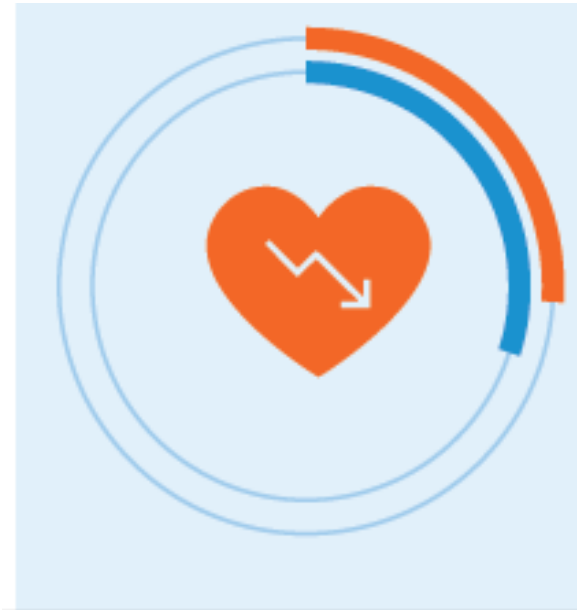
Recognized Importance of Oral Health



Yet Inequities are Pervasive

26%

Adults rate their oral health as poor or fair in the overall survey.



30%

Black adults rate their oral health as poor or fair.

Yet Inequities are Pervasive

13%

of Adults are often embarrassed or self-conscious about their teeth, mouth or dentures.

21%

of Black and 18% of Hispanic adults are often embarrassed or self-conscious about their teeth, mouth or dentures.

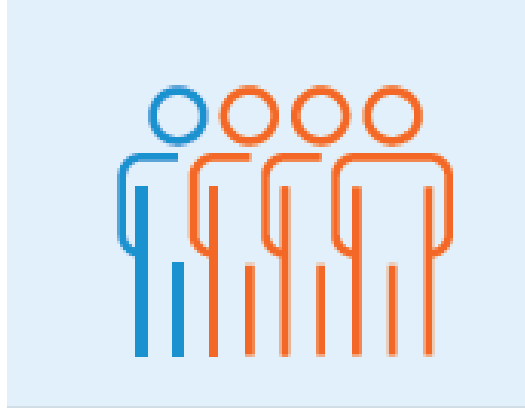
23%

of Americans making less than \$30,000 are often embarrassed or self-conscious about their mouth, compared to only 6% of Americans who make more than \$100,00 per year.

Insurance Coverage



An estimated 75.6M adults lack dental insurance or 30% more than lacking health insurance



3X more adults lack dental insurance than health insurance

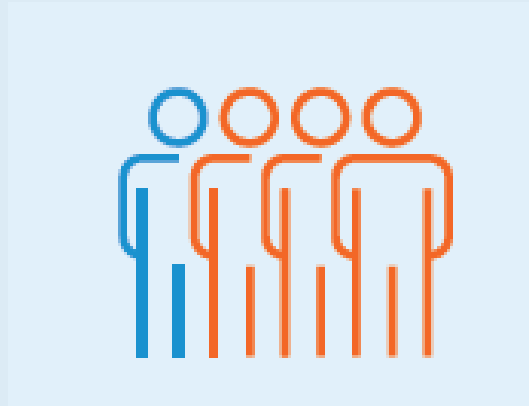


Only 60% of those making <\$30k have insurance vs. 80% adults making +\$100k are insured

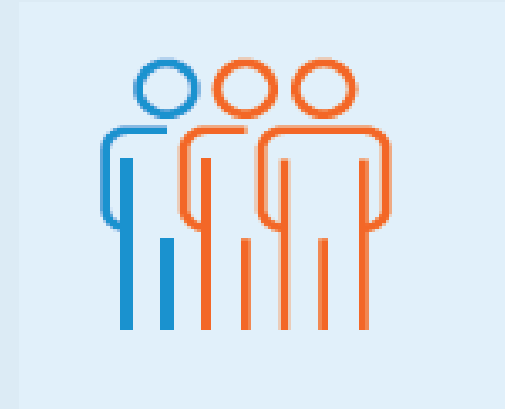
Insurance and COVID-19 Impacts

**5.3
Million**

**Adults lost dental
insurance due to
COVID-19**

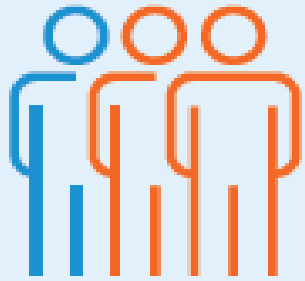


**Asian adults were 3X
more likely to lose
dental insurance**

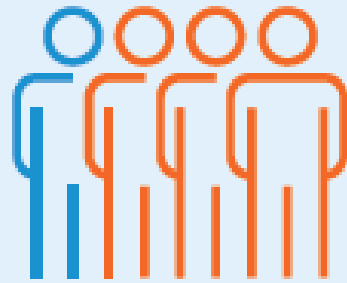


**Black adults were 2X
more likely to lose
dental insurance**

Strong Agreement for “Comprehensive Oral Health Coverage for Adults in Medicaid and Medicare”



2 out of 3 Adults

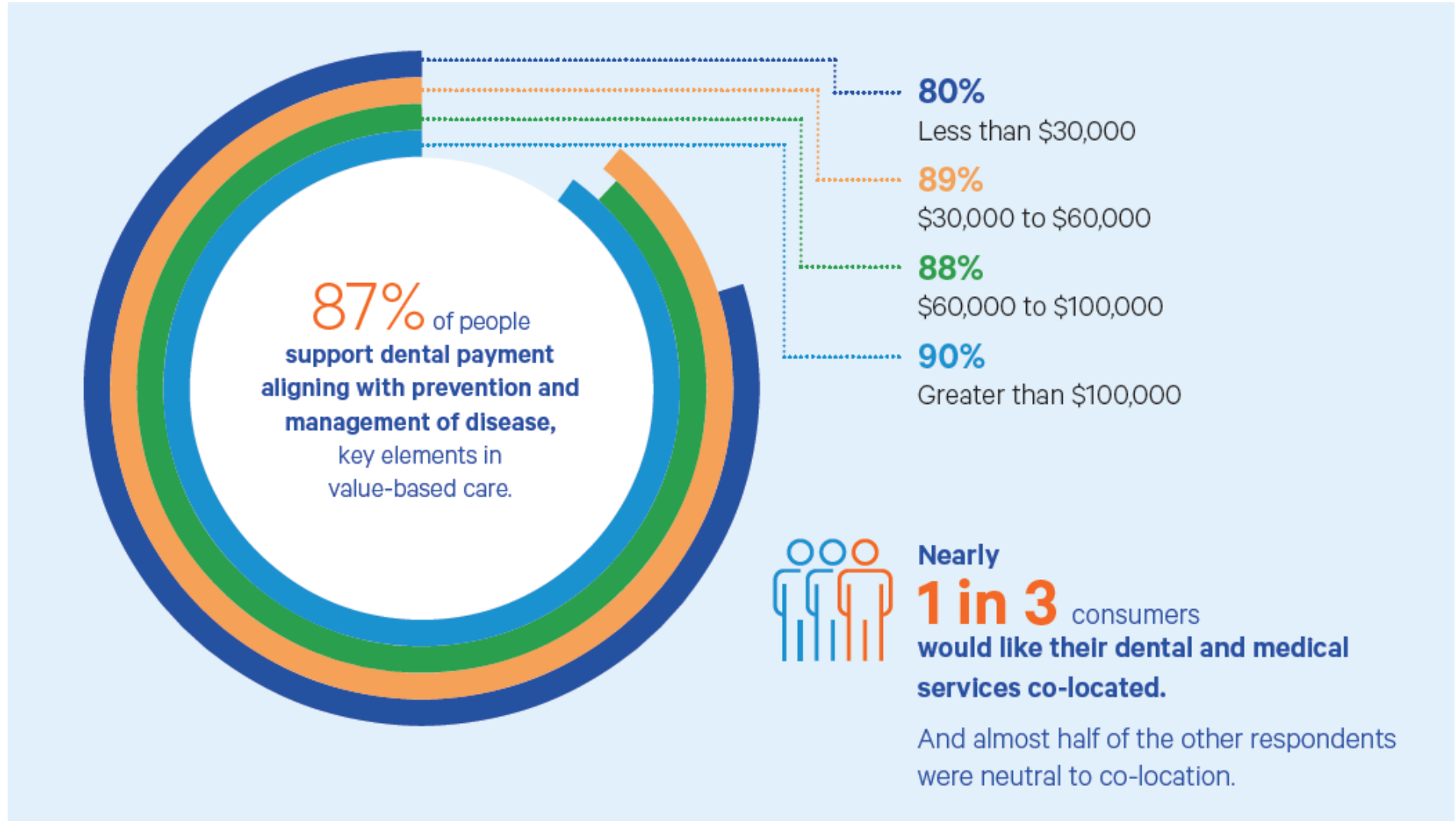


3 out of 4 Adults of Color (Blacks 75%, Hispanics 74%)

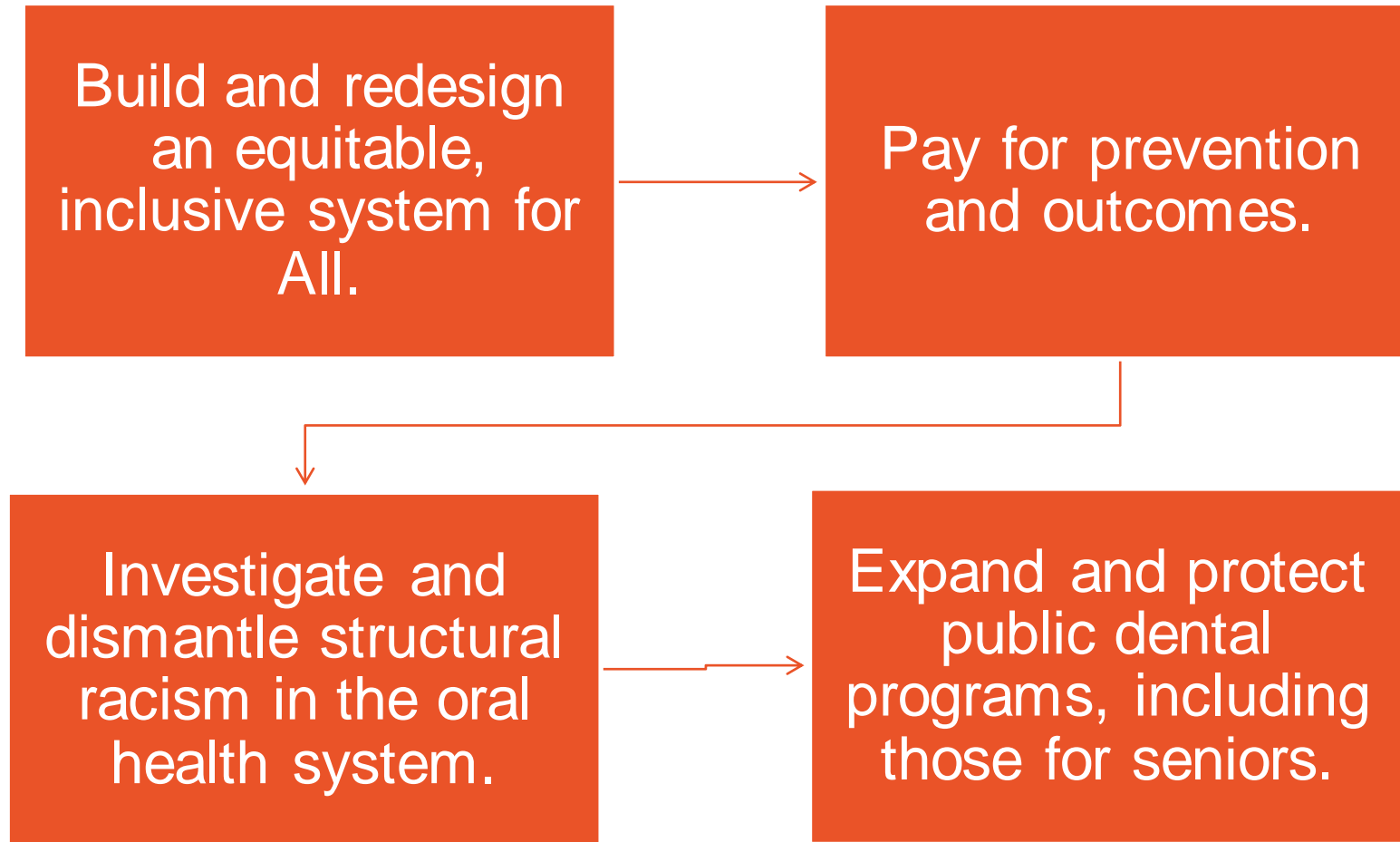
**<\$30k
Income**

Strongest agreement for inclusion in Medicare

Majority of Consumers Support Value-Based Care



Future-Proofing our Oral Health System



Contact Information

Carolyn Brown, DDS, MEd

Senior Advisor, Consultant, Person Centered Care

CareQuest Institute for Oral Health

cbrown@carequest.org



Social Determinants of Health

Madhuli Thakkar-Samtani, BDS, MPH
Biostatistician, Analytics and Evaluation



Dependent Variables

When was your last visit to a dentist?

- **Less than 6 months ago**
- **Between 6 months ago and one year ago**
- More than a year and less than two years ago
- More than 2 and less than 5 years ago
- 5 or more years ago
- Never

In general, how would you rate your oral health (state of your teeth, mouth and gums)?

- Excellent
- Very good
- Good
- **Fair**
- **Poor**

How often in the last year have you been self-conscious or embarrassed because of your teeth, mouth, or dentures?

- **Very often**
- **Fairly often**
- **Occasionally**
- Hardly ever
- Never

Primary Independent Variables

Have you experienced discrimination as a result of race/ethnicity in your lifetime?

- No
- Yes

Have you experienced discrimination as a result of race/ethnicity, age, gender, religion, physical appearance, sexual orientation, language, or any other factors in your lifetime? (Combined scale)

- No
- Yes

How often in the last 12 months have the following statements been true

- My household was worried whether our food would run out before we got money to buy more
- The food we bought just didn't last, and we didn't have money to get more
 - Never true
 - Often true
 - Sometimes true

Since the COVID-19 pandemic began in March, which of the following has happened to you:

- Missed a rent or mortgage payment?
- Been threatened with foreclosure or eviction?
 - No
 - Yes

Within the last year, have you ever delayed care, missed an appointment or been unable to obtain needed health care because of problems with your transportation?

- No
- Yes

Do you currently have dental insurance?

- No
- Yes

Other Confounding Variables

Age categories	Routine medical visit
18-29 years	No
30-44 years	Yes
45-59 years	Location
60+ years	Non-Metro Area
Gender	Metro Area
Male	Employment Status
Female	Working: paid/self
Race categories	Not Working: layoff/looking
White	Retired/Disabled/Other
Black	Household income
Asian	Less than \$30,000
Hispanic	\$30,000 to under \$60,000
Other	\$60,000 to under \$100,000
Mental health status	\$100,000 or more
Fair/Poor	Education status
Excellent/Very Good/Good	Less than high school
Physical health status	High school graduate or equivalent
Fair/Poor	College or more
Other comorbidities	
No	
Yes	

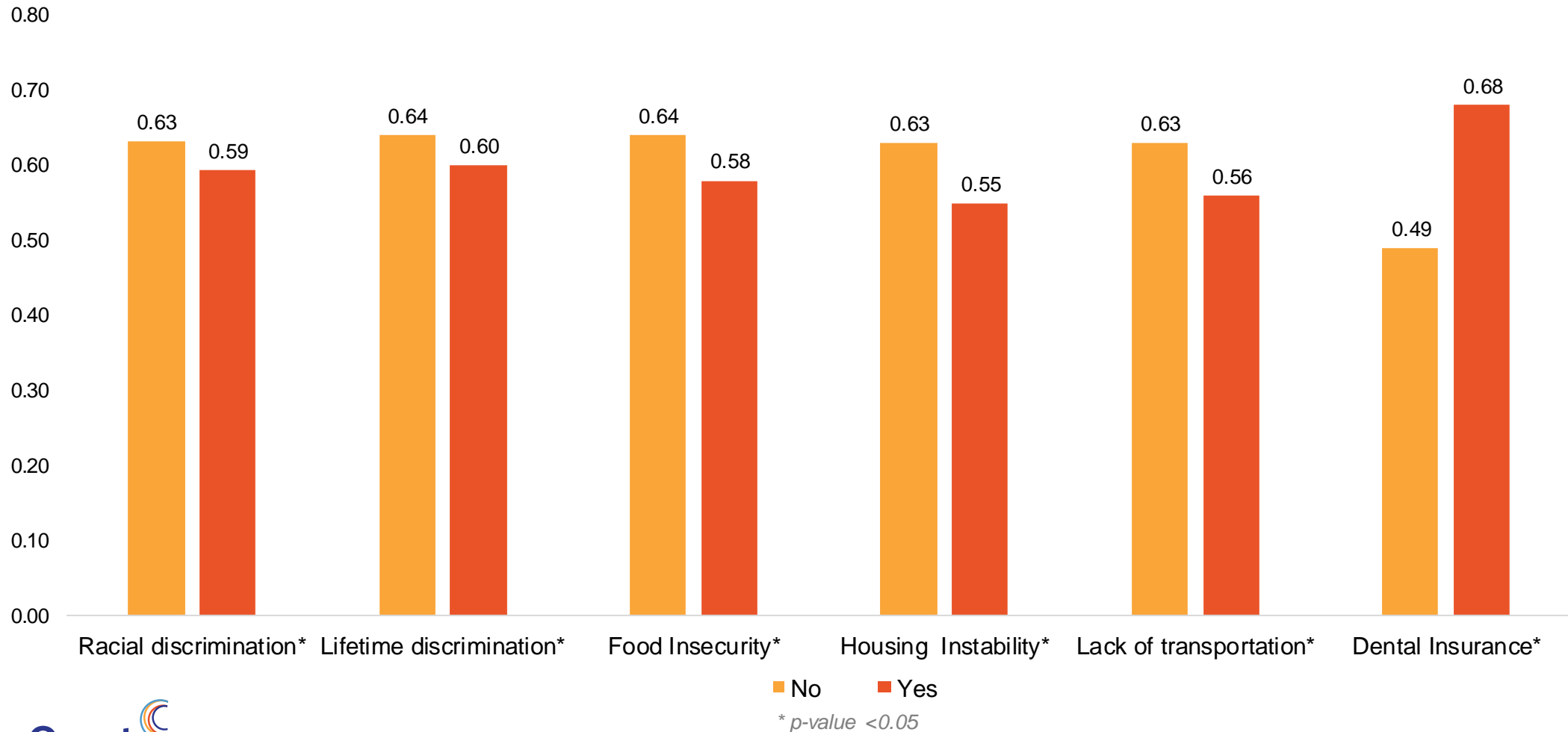
Methodology and Data Analysis

- We ran separate multivariable logistic regression models to examine association between outcome variables and each of the primary independent SDOH variables
- All regression models were adjusted for age, gender, race, self-reported mental and physical health status, other comorbidities, past routine medical visit, location, employment status, household income, and education status
- A *p-value* of <0.05 was deemed to be statistically significant

Descriptive Analysis (N=5,320)	Freq.	Weighted %
Outcome Variables		
Dental visit in the past year		
No	2,021	37.3%
yes	3,295	62.7%
Self-reported oral health status		
Excellent/Very good/Good	3,868	73.8%
Fair/Poor	1,437	26.2%
Self-conscious or embarrassed due to teeth		
No	3,499	66.4%
Yes	1,768	33.6%
Primary Independent Variables		
Racial discrimination		
No	4,055	77.7%
Yes	1,265	22.3%
Lifetime discrimination		
No	2,908	56.2%
Yes	2,412	43.8%
Food Insecurity		
Never true	3,950	74.5%
Often/Sometimes true	1,318	25.5%
Housing Instability		
No	4,588	85.8%
Yes	732	14.2%
Lack of transportation		
No	4,729	89.1%
Yes	556	10.9%
Dental Insurance		
No	1,615	29.7%
Yes	3,687	70.3%

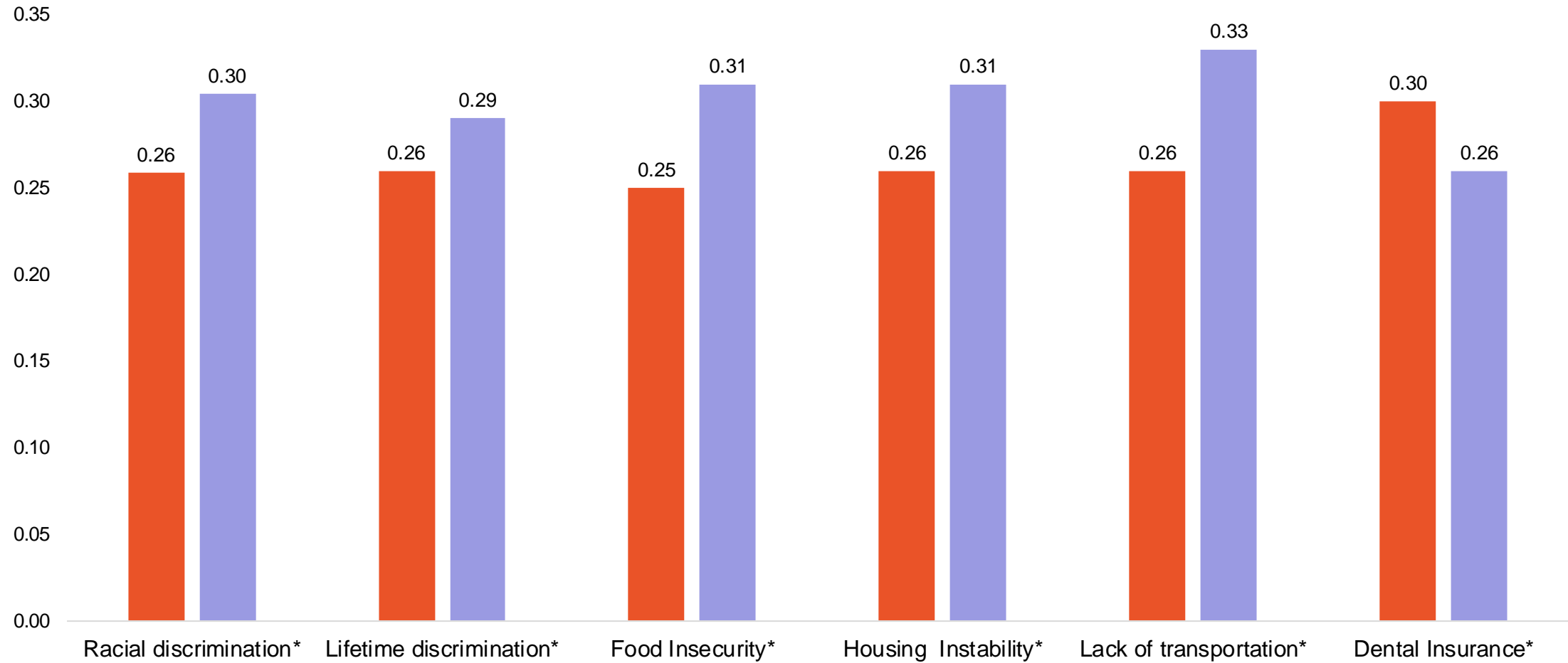
Dental Services Utilization in the Past Year

Predicted probability of dental services utilization in the past year by SDOH variables after adjusting for other confounding variables



Self-reported Oral Health Status

Predicted probability of fair or poor oral health status by SDOH variables after adjusting for other confounding variables

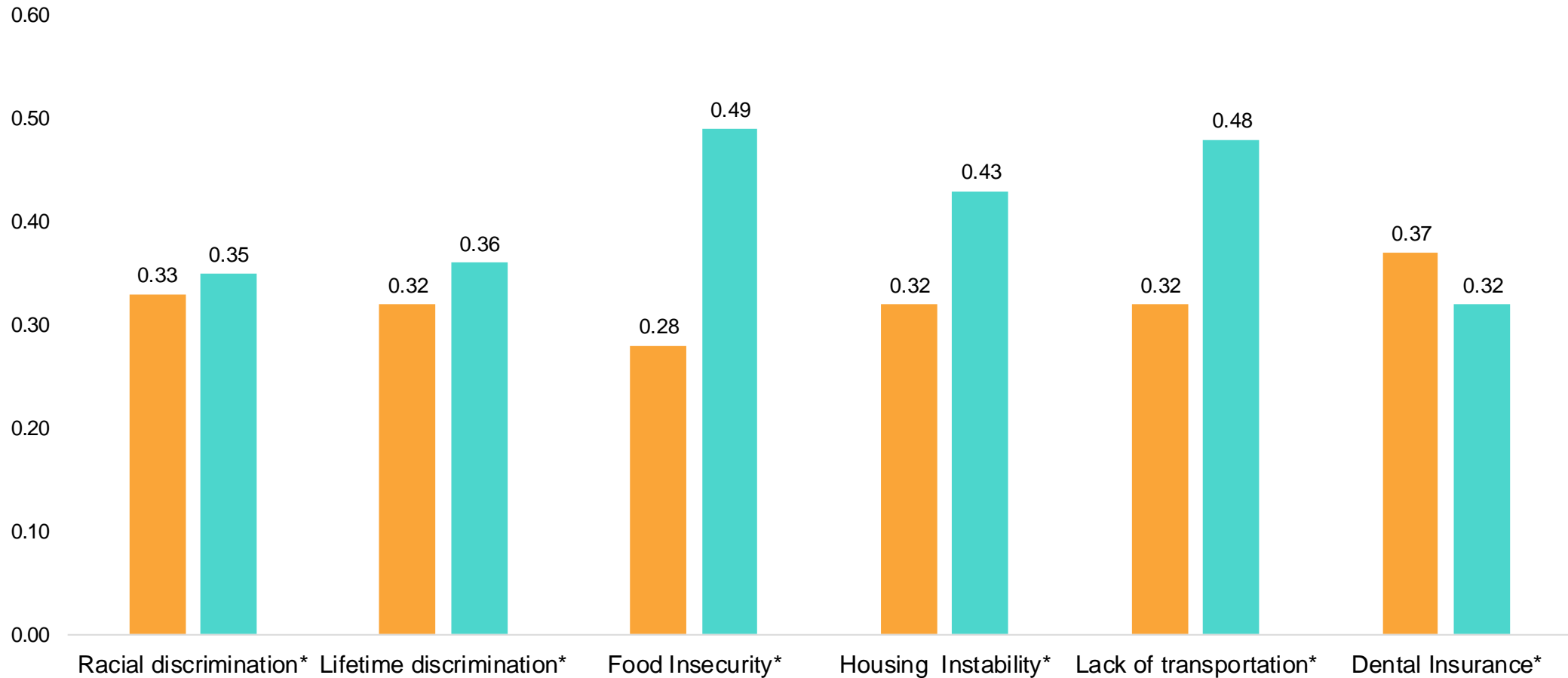


■ No ■ Yes

* p -value < 0.05

Feeling Self-conscious or Embarrassed due to Teeth, Mouth or Dentures

Predicted probability of feeling self-conscious or embarrassed by SDOH variables after adjusting for other confounding variables



Contact Information

Madhuli Thakkar-Samtani, BDS, MPH

Biostatistician, Analytics & Evaluation

CareQuest Institute for Oral Health

msamtani@carequest.org



Growing a Research Agenda for Oral Health Equity

From Data Collection to Practice

Eleanor Fleming, PhD, DDS, MPH
Associate Professor, Meharry Medical College

Study Design: Inclusion-centered

Equity-focused study design

- Models that move beyond race/Hispanic origin, education status, and household income
- Centering social determinants of health and context

Adoption of intersectional theory¹

- "the simultaneous appreciation of multiple social identities, an examination of power and inequality, and a recognition of changing social contexts"

¹Muirhead, VE, Milner, A, Freeman, R, Doughty, J, Macdonald, ME. What is intersectionality and why is it important in oral health research?. *Community Dent Oral Epidemiol.* 2020; 48: 464– 470.

Data Collection: We cannot measure what we fail to ask

Surveillance

- Behavioral Risk Factor Surveillance System Optional Reaction to Race Module (2004-2008)

Mixed methods approaches

- The power of narratives and lived experience
- Patient-provider concordance and oral health outcomes

Practice Informed to Elevate Equity: Housing, Transportation, and Food Security as Key for Health

POLICY-ISH

In Health Care, More Money Is Being Spent On Patients' Social Needs. Is It Working?

June 21, 2021 · 5:00 AM ET

PHIL GALEWITZ

FROM **KHN**

5-Minute Listen

+ PLAYLIST <>



TEMPLE HEALTH

DOCTORS

SERVICES

LOCATIONS

Home > About Temple Health > Newsroom > Program Aimed at Providing Housing & Support Serv...

Program Aimed at Providing Housing & Support Services for People Experiencing Homelessness Sees 75% Decrease in Emergency Department Visits and 79% Decrease in Admissions

VIEW ALL NEWS

HEALTH PARTNERS PLANS, KEYSTONE FIRST, RESOURCES FOR HUMAN DEVELOPMENT, INC. AND TEMPLE UNIVERSITY HOSPITAL TEAMING UP FOR "HOUSING SMART" PROGRAM

June 1, 2021

Health Partners Plans, Keystone First, Resources for Human Development, Inc. (RHD) and Temple University Hospital today announced their collaborative pilot program aimed directly at improving the health of homeless patients by providing them with housing subsidies and support services. Between

Contact Information

Eleanor Fleming, PhD, DDS, MPH

Associate Professor

Department of Dental Public Health

Meharry Medical College

efleming@mmc.edu



Questions

To Explore More of Our Industry-Moving Research



State of Oral Health Equity in America 2021

The following series of reports was developed from findings from a nationally representative survey of consumer and patient attitudes, experiences, and behaviors on oral health. The survey was designed and commissioned by CareQuest Institute for Oral Health.



www.carequest.org/learn/online-learning-center/resource-library/state-oral-health-equity-america-2021



State of Oral Health Equity in America 2021



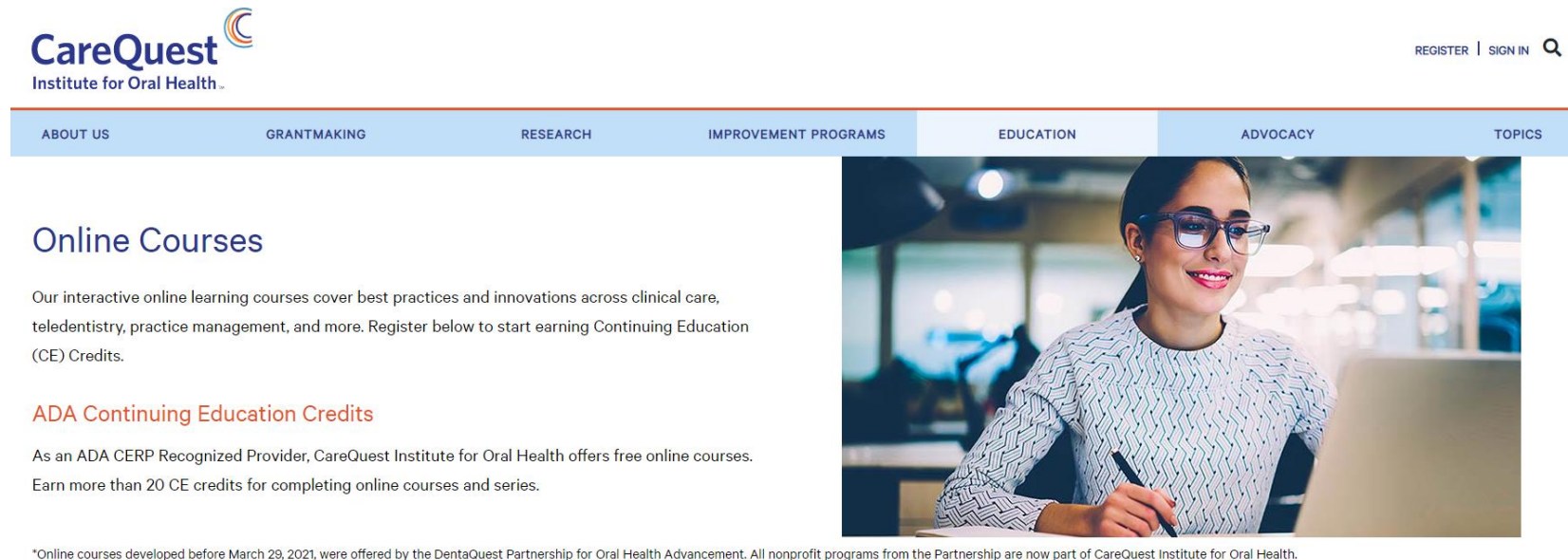
State of Oral Health Equity in America 2021



State of Oral Health Equity in America 2021

CareQuest Institute Online Learning Center

- Visit our website to access past webinar recordings and earn CE credits upon completion of the online learning modules. We also have a wealth of other online learning modules and various resources available to you.
- Sign up for our newsletter to get more information on upcoming webinars.
- <https://www.carequest.org/education/online-courses>



The screenshot shows the CareQuest Institute for Oral Health website. The header includes the logo, navigation links (REGISTER | SIGN IN), and a search icon. The main navigation bar has links for ABOUT US, GRANTMAKING, RESEARCH, IMPROVEMENT PROGRAMS, EDUCATION, ADVOCACY, and TOPICS. The 'Education' section is highlighted, featuring a 'Online Courses' heading and a description of interactive learning modules. A photo of a woman with glasses working on a laptop is also visible.

CareQuest
Institute for Oral Health

REGISTER | SIGN IN

ABOUT US GRANTMAKING RESEARCH IMPROVEMENT PROGRAMS EDUCATION ADVOCACY TOPICS

Online Courses

Our interactive online learning courses cover best practices and innovations across clinical care, teledentistry, practice management, and more. Register below to start earning Continuing Education (CE) Credits.

ADA Continuing Education Credits

As an ADA CERP Recognized Provider, CareQuest Institute for Oral Health offers free online courses. Earn more than 20 CE credits for completing online courses and series.

*Online courses developed before March 29, 2021, were offered by the DentaQuest Partnership for Oral Health Advancement. All nonprofit programs from the Partnership are now part of CareQuest Institute for Oral Health.

Webinar Evaluation

<https://www.carequest.org/node/224764>

Must complete by **July 16 in order to receive CE credit*

Upcoming Webinars:

- **Explore Sodium Diamine Fluoride (SDF) & Pediatric Health**
- **August 2021**

Sign up to receive our newsletter to get more information on future webinars!

SIGN UP FOR NEWS AND UPDATES

Email*

For information on our privacy practices and commitment to protecting your privacy, please review our Privacy Policy. You may unsubscribe from these communications at any time.

Sign Up

Stay Connected!

Follow us on social media and let's get connected!



[carequest-institute](https://www.linkedin.com/company/carequest-institute)



[@CareQuestInstitute](https://www.instagram.com/CareQuestInstitute)



[CareQuestInstitute](https://www.facebook.com/CareQuestInstitute)



[@CareQuestInst](https://www.twitter.com/@CareQuestInst)

CareQuest 
Institute for Oral Health™